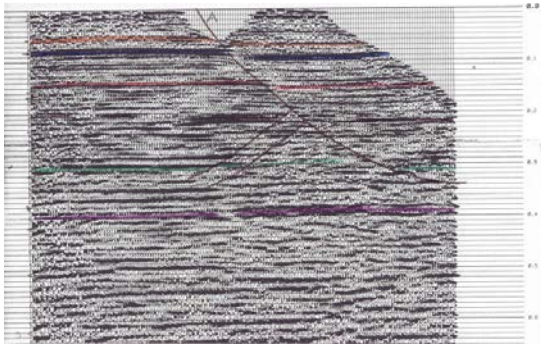
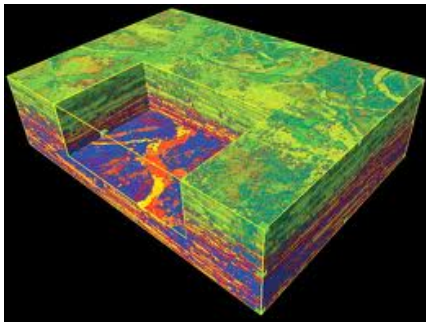


background thud may be heard) or by a surface mounted pad lowered to the ground beneath the tractor units. The source signal travels through the various subsurface rock layers and, at points where the rock type changes, will be reflected back to the surface. The surface positioned Node microphones will detect and record the reflected signals from each seismic source. The recorded data will then be processed and analyzed using powerful computers to produce images of the underlying geological layers as shown below. This is a well-established method used in exploration for oil and gas and other mineral deposits.



Example of Seismic Section



Contact

TESLA Exploration International Limited

Unit 2, Nix's Hill

Nix's Hill Industrial Estate

Alfreton

Derbyshire

DE55 7GN

Tel: 01773 838950 (Mon-Fri)

Email: 1200.Permit@teslaexploration.com

Local Site Contact Tel:

07900 603577 (Mon – Sun)



TESLA Exploration International Limited

**ADVANCE
NOTICE**

**GEOPHYSICAL
SURVEY**



Vibrator Truck



Recording truck with radio antenna



Tractor Mounted Drilling Rig

Over the coming days **TESLA Exploration International Limited** will be conducting a geophysical survey in your area on behalf of **Aurora Energy Resources Limited**. This leaflet explains what you might expect to see. The survey has been carefully planned to minimize any disturbance to residents and the environment. All operations will comply with relevant central and local government regulations and provisions. The permissions of owners and occupiers will have been obtained prior to any survey entry onto private land. Surveying equipment described below may be seen along your road or within adjacent open farmland. One or two specialist vibrator tractor units (top left) or a small auger mounted on a tractor (bottom left) may be seen drilling a series of shallow holes for the seismic charge. Signals generated as part of the survey are received and recorded by a network spread of self-contained sensitive microphones called Nodes (below and right).



Node scaled with house brick

Survey pegs or painted road markings may be seen

at locations for both components of the survey operation.

The Nodes will be planted at regular intervals along each survey route. There may also be a small spread of geophones and cables nearby, which will be connected to a main recording cable through which geophysical data will be transmitted to a small stationary control vehicle. The survey is transient and will be seen to migrate from one side of the prospect to the other as the survey progresses. Neither the surveying equipment used nor the vibrations produced pose any risk to property, public safety or health. During the period of the survey a private security team will be observing our equipment to deter vandalism or theft. If you have any concerns please contact us on the listed numbers.



Nodes in situ (Golf Course)

What are Geophysical Surveys?

Similar in principle to echo sounding used by fishermen at sea to locate fish and to medical ultrasound scanning, geophysical surveys are carried out on a much larger scale and with much lower frequency input signals.

The signals are generated either by a small seismic charge loaded to the base of each hole (a slight